

## DETECTION OF *LISTERIA* SPP. DURING PRODUCTION AND RIPENING OF *PETROVSKÁ KLOBÁSA*

LAKIĆEVIĆ Brankica<sup>1\*</sup>, BUNČIĆ Olivera<sup>2</sup>, KATIĆ Vera<sup>2</sup>, LEPŠANOVIĆ Zorica<sup>3</sup>, PETROVIĆ Ljiljana<sup>4</sup>, JANKOVIĆ Vesna<sup>1</sup>, IKONIĆ Predrag<sup>5</sup>

<sup>1</sup>Institute of Meat Hygiene and Technology, Kačanskog 13, Belgrade, Serbia; <sup>2</sup>Faculty of Veterinary Medicine, Bulevar oslobođenja 18, Belgrade, Serbia; <sup>3</sup>Military Medical Academy Institute of Epidemiology Crnotravska 17 11000 Belgrade Serbia; <sup>4</sup>Faculty of Technology, University of Novi Sad, Bulevar Cara Lazara 1, Novi Sad, Serbia; <sup>5</sup>Institute of Food Technology, University of Novi Sad, Bulevar cara Lazara 1, 21000 Novi Sad, Serbia

(Received 21 March; Accepted 17 April 2014)

The aim of this study was to determine the survival of *Listeria* spp. during the preparation and ripening of an artisan Serbian sausage (Petrovska klobasa) and to characterize the isolates by amplification of the *hlyA* gene. Results obtained by standard microbiological and molecular methods showed that during fermentation, drying, ripening and storage of Petrovska klobasa, 17 out of 99 samples were positive for the presence of *Listeria* spp. Among them we detected a hemolytic, atypical, non pathogenic *L. innocua* strain FSL J1-023, whose genome sequence is important in understanding the role of horizontal gene transfer and recombination in the evolution of pathogenicity of *Listeria*. The most important product characteristics influencing the survival and growth of *Listeria* spp. during production and ripening of Petrovska klobasa were: pH, water activity, temperature and starter culture.

**Key words:** *hlyA*, *Listeria* spp., *L. monocytogenes*, PCR, Petrovska klobasa, survival

### INTRODUCTION

*Listeria monocytogenes* is a psychrotrophic, gram-positive, non-spore-forming, facultative anaerobic bacteria, that has become an important cause of human foodborne infections worldwide [1]. It is associated with meningoencephalitis, septicaemia and abortion in humans, especially in individuals at risk including pregnant women, newborn babies, the elderly and the immunocompromised [2,3]. Foodborne listeriosis, caused by the pathogen *Listeria monocytogenes*, is a relatively rare but serious disease with high fatality rates (20–30%) compared with other foodborne pathogens, such as *Salmonella* [4]. All *Listeria* species have been isolated from soil, decaying vegetable matter, silage, sewage, water, and animal feed [5].

\* Corresponding author: e-mail: brankica@inmesbgd.com

*L. monocytogenes* is recognized as a problem for the food industry mainly due to its environmental persistence, attributed in part to its ability to form biofilms. Various studies have indicated that certain strains of *L. monocytogenes* survive well within the food processing environment [6-8] and the persistence of such strains is of concern as they have the potential to act as a continuous source of contamination [8]. *L. monocytogenes* has the ability to adhere to and grow on a variety of surfaces found in food processing plants including stainless steel, rubber, glass and polypropylene [9]. The best environment for listeria growth is thermally untreated food, food that spent a long time during storage, food that has been produced in non-hygienic food plants as well as cooked-cooled meals “ready to eat” (RTE) [10].

The identification of *L. monocytogenes* based on standard microbiological methods is laborious, time consuming [11] and in food products requires up to a week for species identification [12]. Therefore, faster techniques have been applied, without the need for isolation of pure cultures.

The present study was conducted in order to:(a) detect *Listeria* spp. strains during the preparation and ripening of an artisan Serbian sausage (*Petrovska klobasa*), in the ingredients used to make sausages and in the environment surface samples, (b) characterize the isolates by amplification of the *hlyA* gene and (c) analyze the influence of the physico-chemical properties on survival of *Listeria* spp.

## MATERIALS AND METHODS

### **Bacterial strains and growth conditions**

The standard strains of *Listeria monocytogenes* 4b ATCC 19115 and *Listeria innocua* ATCC 33090 were obtained from the American Type Culture Collection (ATCC; Manassas, Va., USA). Standard strains were grown on brain-heart agar (BHA) (Merck, GmbH Darmstadt, Germany) and buffered peptone water (Merck) at 37°C.

### **Samples**

Raw materials used for *Petrovska klobasa* production (meat, spices and meat batter), environmental surfaces samples and pig carcass swabs were examined for the presence of *Listeria* spp.

The investigation covered a seven-month period of *Petrovska klobasa* production, starting in February 2011 with slaughtering and sausage preparation, finishing with the end of the storage period in September 2011.

### **Preparation of Petrovska klobasa**

*Petrovska klobasa*, traditional dry-cured sausage, is produced in rural households, in an area nearby the town of Bački Petrovac in the Autonomous Province of Vojvodina (Northern Serbia), according to the experience and traditional technology.

*Petrovskeá klobása*, were manufactured from a mixture of lean minced pork (80%) and pig fat (20%) obtained from carcasses of large white cross breed animals. After grinding the meat and the fat to a size of about 10 mm (with adjustable plate holder diameter set), raw materials were mixed with seasonings (2.50% red hot paprika powder, 1.80% salt, 0.20% raw garlic paste, 0.20% caraway and 0.15% sucrose) for about 10min. Two different formulations of sausages were prepared: one formulation with commercial meat starter culture (Quick- starter, Lay, Germany), while the other formulation was without the starter culture so the sausages were subjected to spontaneous fermentation. The commercial meat starter culture was added according to the manufacturer's recommendations: 15 g / 100 kg of meat batter. The seasoned batter was immediately stuffed in collagen casings (Cutisin, 55 mm in diameter) and the raw sausages with two different formulations were subjected to industrial controlled drying conditions (E1-sausages made in the household and dried in the industry, E2-sausages made in the household with the addition of commercial meat starter culture) ( $t = 3.5 - 18.6^{\circ}\text{C}$ ) until achieving a moisture content of 35% (60 days) and to uncontrolled traditional conditions (D1-sausages made in the household and dried in the traditional way, D2-sausages made in the household with the addition of commercial meat starter culture). After 60 days of drying and ripening, the sausages marked as E1 and E2, were stored unpacked, packed in chitosan and vacuum packaging. The traditional temperature ranged from  $-1.00$  to  $19.7^{\circ}\text{C}$  and these sausages, cold smoked with specific kinds of wood during 10-15 days (with pauses), reached moisture content  $<35\%$  after 90 days when they were moved to an industrial facility to complete the ripening process. One part of the sausages was stored unpacked and the other was packed in a vacuum packaging. Both groups of sausages were stored at  $t = 10^{\circ}\text{C}$ ,  $\text{RH} = 75\%$ , for 7 months. Sampling was carried out before stuffing (at day 0) and on the 2<sup>nd</sup>, 6<sup>th</sup>, 9<sup>th</sup>, 15<sup>th</sup>, 30<sup>th</sup>, 60<sup>th</sup>, 90<sup>th</sup>, 120<sup>th</sup> day. Portions of 25 g were used for microbiological analyses.

### ***Environmental surface samples***

Environmental swabs taken from machines (mincing and stuffing), working tables, knives and cleavers, workers' hands and coveralls collected according to ISO 18593 [13]. The samples were labeled from 1-20, and kept refrigerated and analyzed within 2 h.

### ***Pig carcass swabs***

For the control of the general hygiene of food processing operations the swabs were taken from the following pig carcass sites: back, cheek, ham and stab. Sampling was performed by using a non-destructive method which is described in the international standard [14].

### ***Detection and isolation of *Listeria spp.****

The standard microbiological method was carried out by two-step enrichment [15]. For primary enrichment, samples were homogenized in half-concentrated Fraser

broth and incubated at 30°C for 24 h. After that, 100 µl was transferred into 10 ml of Fraser broth and incubated for 48 h at 37°C. A loopful of the secondary enrichment broth culture was plated onto polymyxin-acriflavine-lithium chlorideceftazidime-aesculin-mannitol (PALCAM) agar (Merck) and OXFORD (Oxoid, UK) agar plates, and incubated for 48 h at 37°C. For each sample *Listeria* presumptive colonies were tested for catalase and oxidase reactions, Gram staining and motility.

### **Identification of *Listeria* isolates**

#### **Biochemical identification**

Hemolysis was assessed by streaking isolated colonies on 5% sheep blood agar (Base: meat peptone 15 g l<sup>-1</sup>, liver digest 2.5 g l<sup>-1</sup>, yeast extract 5 g l<sup>-1</sup>, sodium chloride 5 g l<sup>-1</sup>, agar 9 g l<sup>-1</sup>. To 100 ml base, 5 ml of defibrinated sheep blood was added). After 24 h of incubation at 37°C the plates were examined for the presence of a zone of hemolysis.

Biochemical identification of the *Listeria* isolates was performed using the culture method in combination with API *Listeria* identification system (BioMerieux, France). API test was performed according to the manufacturer's instructions.

#### **PCR identification**

The strains identified as *Listeria* spp. were further confirmed by PCR amplification targeting the *hlyA* locus encoding listeriolysin O. Primers used in this study are listed in Table 1. Final species determination was performed by *hlyA* sequencing.

**Table 1.** Oligonucleotides used in this study for PCR detection of *Listeria monocytogenes*

Primer sequences orientation 5'→3'	PCR product (bp)	Target gene	Reference
LM1: CCTAAGACGCCAATCGAA LM2: AAGCGCTTGCAACTGCTC	702	<i>hlyA</i>	BORDER & al.[31]

Total DNA from isolates was extracted by using the DNeasy Tissue Kit (Qiagen GmbH, Germany) according to the manufacturer's protocol for Gram-positive bacteria. Lysates were kept on ice until PCR was performed. DNA solution (5 µl) was used as a template for PCR amplification (0.1-1 µg).

PCR was performed in a final volume of 50 µL containing 1 x PCR buffer (10 x PCR buffer: 500 mM KCl, 100 mM Tris-HCl, 0.8% Nonidet P40), 2.5 mM MgCl<sub>2</sub>, 200 µM of each dNTP, 2.5 µM of each primer, 1 U of *Taq* polymerase (Fermentas UAB, Lithuania) and 0.1-1 µg of DNA template. The samples were subjected to amplification in a DNA thermal cycler (Flexigene, Techne, UK). Amplification conditions, with primers targeting *hlyA* were as described previously [2].

The *hlyA* amplicons were purified by QIAquick PCR Purification KIT/250 (QIAGEN) and sequenced using the same primers as for PCR, by the IIT Biotech sequencing service in Bielefeld, Germany. The BLAST algorithm (<http://www.ncbi.nlm.nih.gov/BLAST>) was used to determine the most related sequence relatives in the NCBI nucleotide sequence database.

### **Physico-chemical analysis**

Water activity of the sausages was measured during defined phases of ripening, using Testo 650 measuring instrument with a pressure – tight precision humidity probe (Testo AG, USA). The pH values of sausages were measured using a portable pH meter (Consort C931, Turnhout, Belgium) equipped with an insertion glass combined electrode (Mettler Toledo Greifensee, Switzerland).

## **RESULTS**

Results obtained by standard microbiological and molecular methods showed that during fermentation, drying, ripening and storage of *Petrovská klobása*, 17 out of 99 samples were positive for the presence of *Listeria* spp., including environmental samples (coveralls), pig carcass swabs, red hot paprika powder, 2 meat batters and 12 sausages.

Results obtained in our study indicated that the pig carcass was contaminated with *L. monocytogenes* which was isolated only from ham (1). The swabs from coveralls (9) were also contaminated with *L. monocytogenes* (Table 2).

Interestingly, sequencing of obtained *hlyA* DNA fragments demonstrated that swabs from the ham and coveralls were contaminated with the same strain of *L. monocytogenes* (*L. monocytogenes* strain NRRL B-33446).

As for the spices used in the preparation of the *Petrovská klobása*, red hot paprika powder (5L) was contaminated with nonpathogenic *Listeria* spp., *L. innocua*. Other nonpathogenic *Listeria* spp., *L. grayi* (from meat batters and sausages) and *L. welshimeri* (from sausage) were also isolated during production of *Petrovská klobása* (Table 2).

In order to ensure the safety of traditional fermented sausages, monitoring of *Listeria* spp. during their storage was carried out according to the current legislation. Based on the obtained results it can be concluded that this group of bacteria was present in sausages from 2<sup>nd</sup> (D11, D21, E11, E21), 6<sup>th</sup> (D12, D22, E12, E22) 9<sup>th</sup> (D13, D23, E23) and 15<sup>th</sup> (D14) days of production (Table 2).

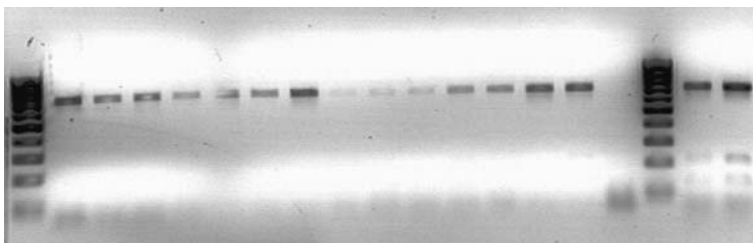
The microbiological identification results show that *L. monocytogenes* isolates were obtained from 5 samples and these isolates were D11, D21, E11, D23 and E23. The isolates were further checked by PCR using *hlyA* gene specific primers (LM1 / LM2). Results indicated that all 5 isolates were positive for the presence of *hlyA* genes (Fig. 1).

Sequencing of the obtained *hlyA* PCR fragments from these 5 samples showed a significant homology (100 % and 99 %) with *L. monocytogenes* strain NRRL B-33467 (Table 2), serogroup 1/2a.

**Table 2.** Detection of *Listeria* spp. during production and ripening of *Petrovska klobása*, traditional dry-fermented sausage from Northern Serbia

Sample code	Type of the sample	Classical method	PCR	Sequencing
1	swab from ham	<i>L. monocytogenes</i>	+	<i>L. m</i> NRRL B-33446
9	swab from coveralls	<i>L. monocytogenes</i>	+	<i>L. m</i> NRRL B-33446
3L	batter with starter	<i>L. grayi</i>	+	<i>L. innocua</i> FSL J1-023
4L	batter without starter	<i>L. grayi</i>	+	<i>L. innocua</i> FSL J1-023
5L	red hot paprika power	<i>L. innocua</i>	–	nd
D11	sausage (2 <sup>nd</sup> day)	<i>L. monocytogenes</i>	+	<i>L. m</i> NRRL B-33467
D21	sausage (2 <sup>nd</sup> day)	<i>L. monocytogenes</i>	+	<i>L. m</i> NRRL B-33467
E11	sausage (2 <sup>nd</sup> day)	<i>L. monocytogenes</i>	+	<i>L. m</i> NRRL B-33467
E21	sausage (2 <sup>nd</sup> day)	<i>L. grayi</i>	+	<i>L. innocua</i> FSL J1-023
D12	sausage (6 <sup>th</sup> day)	unacceptable profile	+	<i>L. innocua</i> FSL J1-023
D22	sausage (6 <sup>th</sup> day)	unacceptable profile	+	<i>L. innocua</i> FSL J1-023
E12	sausage (6 <sup>th</sup> day)	unacceptable profile	+	<i>L. innocua</i> FSL J1-023
E22	sausage (6 <sup>th</sup> day)	unacceptable profile	+	<i>L. innocua</i> FSL J1-023
D13	sausage (9 <sup>th</sup> day)	<i>L. welshimeri</i>	–	nd
D23	sausage (9 <sup>th</sup> day)	<i>L. monocytogenes</i>	+	<i>L. m</i> NRRL B-33467
E23	sausage (9 <sup>th</sup> day)	<i>L. monocytogenes</i>	+	<i>L. m</i> NRRL B-33467
D14	sausage (15 <sup>th</sup> day)	<i>L. grayi</i>	+	<i>L. innocua</i> FSL J1-023

nd – not determined; E1 – sausages made in the household and dried in the industry; E2 – sausages made in the household with the addition of commercial meat starter culture; D1 – sausages made in the household and dried in the traditional way; D2 – sausages made in the household with the addition of commercial meat starter culture



**Figure 1.** Agarose gel electrophoresis of the PCR products obtained by using LM / LM2 primers: M marker (MassRuler™ DNA Ladder), swab from ham (1), swab from coveralls (9), sausage - 2<sup>nd</sup> day (D11), sausage - 2<sup>nd</sup> day (D21), sausage - 2<sup>nd</sup> day (E11), sausage - 2<sup>nd</sup> day (E21), sausage - 6<sup>th</sup> day (D12), sausage - 6<sup>th</sup> day (D22), sausage - 6<sup>th</sup> day (E12), sausage - 6<sup>th</sup> day (E22), sausage - 9<sup>th</sup> day (D23), sausage - 9<sup>th</sup> day (E23), sausage - 15<sup>th</sup> day (D14), *Lm* - *L. monocytogenes* 4b ATCC 19115, Nk - negative control, M marker (MassRuler™ DNA Ladder), batter with starter (3L), batter without starter (4L)

## DISCUSSION

As seen in Table 2, the swabs from the pig carcass and coveralls were contaminated with *L. monocytogenes*. These results confirm that both animals and personnel can be a potential source of contamination by bacteria of the genus *Listeria* during the ripening period of dry fermented sausages.

A number of authors mention frequent findings of *Listeria* spp. both on poultry carcasses and in the slaughterhouse itself, particularly at the end of the slaughter line [16]. Miettinen *et al.*, [17] assumed that increased contamination with *L. monocytogenes* occurs after chilling when carcasses are cut up and, mainly, when their skin is removed. Previously, the authors [18,19] reported frequent findings on poultry cuts and especially, on the hands of slaughterhouse staff, slaughterhouse desks and equipment. It follows from the above that *Listeria* spp. can persist in the slaughterhouse environment, and the high prevalence of these bacteria may be a sign of insufficient hygiene practices.

According to our findings, *L. monocytogenes* isolates were obtained from 5 sausage samples and these isolates were labeled as: D11, D21, E11, D23 and E23. Direct sequencing of *hlyA* PCR fragments and nucleotide sequence analysis demonstrated significant homology with *L. monocytogenes* strain NRRL B-33467. Ward *et al.* [20] indicated that NRRL B-33467 is an atypical strain and suggest that the 1/2a serotype has multiple evolutionary origins or that the 1/2a serotype has been acquired by some strains with a 1/2c genomic background via genetic exchange.

As seen in Table 2, *L. innocua* (from red hot paprika powder), *L. grayi* (from meat batters and sausages) and *L. welshimeri* (from sausage), were also isolated and their detection is often used as an indicator of the presence of *L. monocytogenes* [21]. The isolates which were identified using the standard microbiological methods as *L. grayi* (meat batter with and without commercial starter culture and sausages) (3L, 4L, E21, D14) or were with a biochemical unacceptable profile (D12, D22, E12, E22) belong to a hemolytic, atypical, rare, natural, non pathogenic *L. innocua* strain FSL J1-023. To this conclusion we reached after PCR, based on *L. monocytogenes* specific *hlyA* encoding listeriolysin (Figure 1) and after sequencing of the obtained *hlyA* DNA fragment. Literature data indicate this aberrant strain is exceptional in that it contains the pathogenicity island [22] and a homologue of a surface protein, internalin *inlA* [23]. *L. innocua* strain FSL J1-023 is hemolytic-positive, rhamnose and xylose fermentation-negative *Listeria* strain which gives contradictory results in standard confirmatory tests [22]. The genomic sequence of this strain is of great importance because it will help us to understand the overall importance of homologue recombinations in the evolution of *L. innocua* and *L. monocytogenes*. For this reason, application of molecular methods allows for reliable monitoring of all *Listeria* species and it can be exploited for a better understanding of the occurrence and distribution of *Listeria* during the ripening of dry fermented sausages. Also, molecular subtyping is essential for *L. monocytogenes* outbreak detection and epidemiological investigations, which are further complicated by the long incubation time for invasive listeriosis and the difficulty in identifying appropriate

controls for case-control studies [24]. On the other hand, molecular methods can provide “same-day” identification, which represents a significant reduction in time compared to standard microbiological methods for identification of *Listeria* spp. from positive food samples. This assay represents a significant improvement over standard microbiological methods due to its rapid and non-tedious format [25]. Also, Lakicevic *et al.* [26] suggest the need to use combined methods in order to obtain an accurate identification of *Listeria* spp.

Nonpathogenic *Listeria* spp. from feed samples (*L. innocua*) and from the sausage – D13 (*L. welshimeri*), by using PCR method, were negative for the presence of *L. monocytogenes*, so it was not necessary to perform DNA sequencing.

### **pH and $a_w$**

After 9 days of *Petrovska klobasa* production, *Listeria* spp. were not detected in homemade sausages dried the industrial way (E 13). This can be explained by the fact that the water activity ( $a_w$ ) was lower than 0.94 and the pH value was lower than 5. After 15 days of production, *Listeria* was detected only in homemade sausages ripening in uncontrolled traditional conditions (D14). On the same day, there has a been loss of *Listeria* populations for homemade sausages with the addition of commercial starter culture and dried in the industrial (E24) and traditional way (D24), although the food had properties ( $a_w$  and pH) favorable for its growth. This can be explained by the fact that the preservatives and protective microflora, especially the starters, have a significant impact on the survival and growth of *Listeria* [27]. Literature data indicate that different strains of *Lb. sakei* isolated from meat and meat products have the ability to produce secondary metabolic substances – bacteriocines with a strong antilisterial activity [28-30].

## **CONCLUSION**

*Listeria monocytogenes*, a serious hazard in relatively closed environments such as food processing plants, survives extremely well in the processing plant environment. Analysis of the production of traditional and autochthonous fermented sausages have confirmed that animals, stuff and ingredients were potential sources of *Listeria* spp. *L. monocytogenes* also has the tendency to form biofilms when resident populations become established in niches in the processing plant. These resident populations and the biofilms they form to enhance their survival are not easily eliminated by general-purpose cleaners or sanitizers and normal sanitation procedures.

Furthermore the temperature, water activity, pH and starter cultures had affected the survival and growth of *L. monocytogenes* during the production of the traditional fermented dry sausage. It should be pointed out that at the end of the production cycle, *Listeria* spp were not determined, in spite of the fact whether commercial culture or natural fermentation was used.



## Acknowledgement

The authors wish to express their sincere gratitude to the Ministry of Education and Science of the Republic of Serbia for its financial support (Project Number: TR 31032).

## REFERENCES

1. Liu D: Identification, subtyping and virulence determination of *Listeria monocytogenes*, an important foodborne pathogen J Med Microbiol 2006, 55: 645 - 659.
2. Aznar R., Alarcon B.: PCR detection of *Listeria monocytogenes*: a study of multiple factors affecting sensitivity. J Appl Microbiol 2003, 95: 958 - 966.
3. Dimitrijević M., Teodorović V., Karabasil N., Teodorović R., Bunčić O.: Can electrophoretic types of *Listeria monocytogenes* induce different sensitivity to lactic acid bacteria bacteriocins? Acta Vet 2005, 55: 161 - 169.
4. FAO/WHO Microbiological Risk Assessment Series: Risk Assessment of *Listeria monocytogenes* in ready-to-eat foods: Interpretative Summary <http://www.who.int/foodsafety/micro/jemra/assessment/listeria/en> Accessed on 24 April 2008, 2002.
5. Moltz AG., Martin SE.: Formation of biofilms by *Listeria monocytogenes* under various growth conditions, J Food Protect 2005, 68: 92 - 97.
6. Kathariou S.: *Listeria monocytogenes* virulence and pathogenicity, a food safety perspective, J Food Protect 2002, 65: 1811 - 1829.
7. Tompkin RB.: Control of *Listeria monocytogenes* in the food-processing environment. J Food Protect 2002, 65: 709 - 725.
8. Pan Y., Breidt JrF., Kathariou S.: Resistance of *Listeria monocytogenes* biofilms to sanitizing agents in a simulated food processing environment. Appl Environ Microbiol 2006, 72: 7711 - 7717.
9. Lunden JM., Miettinen MK., Autio TJ., Korkeala HJ.: Persistent *Listeria monocytogenes* strains show enhanced adherence to food contact surface after short contact times. J Food Protect 2000, 63: 1204 - 1207.
10. Kuzmanović J., Ašanin R., Baltić M., Mišić D., Dimitrijević M., Stojanović M., Ašanin N., Kovačević I.: Presence of *Listeria* spp in fish samples, fish products and sea products. Acta Vet 2011, 61: 193 - 203.
11. Stjepanovic A., Markovic B., Veskovic – Moracanin S.: Molecular biology techniques in microbiological control of meat and meat products. Tehnologija mesa 2007, 48: 123 - 131.
12. ISO 11290-2: Microbiology of food and animal feeding stuffs – Horizontal method for the detection and enumeration of *Listeria monocytogenes* – Part 2: Enumeration Method, 1998.
13. ISO 18593: Microbiology of food and animal feeding stuffs – Horizontal methods for sampling techniques from surfaces using contact plates and swabs, 2004.
14. ISO 17604: Microbiology of food and animal feeding stuffs-carcass sampling for microbiological analysis, 2003.
15. ISO 11290-1: Microbiology of food and animal feeding stuffs-Horizontal method for the detection and enumeration of *Listeria monocytogenes* - Part 1: Detection method, 1996.
16. Rørvik LM., Aase B., Alvestad T., Caugant DA.: Molecular epidemiological survey of *Listeria monocytogenes* in broilers and poultry products. J Appl Microbiol 2003, 94: 633-640.

17. Miettinen MK., Palmu L., Bjorkroth KJ., Korkeala HJ.: Prevalence of *Listeria monocytogenes* in broilers at the abattoir, processing plant and retail level. *J Food Protect* 2001, 64: 994 - 999.
18. Loura CAC., Almeida RCC., Almeida PF.: The incidence and level of *Listeria* spp. and *Listeria monocytogenes* contamination in processed poultry at a poultry processing plant, *J Food Safety* 2004, 25: 19 - 25.
19. Jankovic V., Petrovic Lj., Lakicevic B., Matekalo – Sverak V., Lilic S., Mitrovic R.: Determination of typical house flora during production process of the Petrovac sausage (Petrovska klobasa). *Afr J Microbiol Res* 2013, 7: 4130 - 4137.
20. Ward TJ., Ducey TF., Usgard T., Dunn KA., Bielawski JP.: Multilocus genotyping assays for single nucleotide polymorphism-based subtyping of *Listeria monocytogenes* isolates. *Appl Environ Microbiol* 2008, 74: 7629 - 7642.
21. Heisick JE., Rosas – Marty LL., Tatini SR.: Enumeration of viable *Listeria* species and *Listeria monocytogenes* in foods. *J Food Protect* 1995, 58: 733 - 736.
22. Johnson J., Jinneman K., Stelma G., Smith BG., Lye D., Messer J., Ulaszek J., Evsen L., Gendel S., Bennett RW., Swaminathan B., Pruckler J., Steigerwalt A., Kathariou S., Yildirim S., Volokhov D., Rasooly A., Chizhikov V., Wiedmann M., Fortes E., Duvall RE., Hitchins AD.: Natural Atypical *Listeria innocua* strains with *Listeria monocytogenes* pathogenicity island 1 genes. *Appl Environ Microbiol* 2004, 70, 4256 - 4266.
23. Volokhov DV., Duperriera S., Neverov AA., George J., Buchrieser C., Hitchins AD.: The presence of the internalin gene in natural atypically hemolytic *Listeria innocua* strains suggests descent from *L. monocytogenes*. *Appl Environ Microbiol* 2007, 73: 1928 - 1939.
24. Swaminathan B., Gerner-Smidt P.: The epidemiology of human listeriosis. *Microbes Infect* 2007, 9: 1236 - 1243.
25. Lakicevic B., Stjepanovic A., Tolinacki M., Golic N., Topisirovic Lj.: Improved sensitivity and reproducibility of the PCR method for detection of *Listeria* spp. and *L. monocytogenes* in milk. *Acta Vet* 2011, 61: 239 - 245.
26. Lakicevic B., Stjepanovic A., Milijasevic M., Terzic Vidojevic A., Golic N., Topisirovic Lj.: The presence of *Listeria* spp. and *Listeria monocytogenes* in a chosen food processing establishment in Serbia. *Arch Biol Sci* 2010, 62: 881 - 887.
27. Katic V.: Primena kriterijuma za *L. monocytogenes*. Bezbednost i kvalitet namirnica animalnog porekla. Zbornik radova, 2. Simpozijum, Beograd 2010, 32, 43.
28. Hugas M., Garriga M., Aymerich MT., Montfort LM.: Inhibition of *Listeria* in dry fermented sausages by the bacteriocinogenic *Lactobacillus sake* CTC 494. *J Appl Bacteriol* 1995, 79: 322 - 330.
29. Kaiser AL., Montville TJ.: Purification of the bacteriocin Bavaricin MN and characterization of its mode of action against *Listeria monocytogenes* scott A-cell and lipid vesicles. *Appl Environ Microbiol* 1996, 62: 4529 - 4535.
30. Dimitrijević M., Teodorović V., Baltić M., Karabasil N.: Different sensitivity of various serotypes of *Listeria monocytogenes* to lactic acid bacteria bacteriocins. *Acta Vet* 2004, 54: 201 - 208.
31. Border PM., Howard JJ., Plastow GS., Siggins KW.: Detection of *Listeria* species and *Listeria monocytogenes* using polymerase chain reaction. *Lett Appl Microbiol* 1990, 11: 158 - 162.

## DETEKCIJA *LISTERIA* SPP. U TOKU PROIZVODNJE I ZRENJA PETROVAČKE KOBASICE

LAKIĆEVIĆ Brankica, BUNČIĆ Olivera, KATIĆ Vera, LEPŠANOVIĆ Zorica, PETROVIĆ Ljiljana, JANKOVIĆ Vesna, IKONIĆ Predrag

Cilj ovog rada je bio da se utvrdi preživljavanje *Listeria* spp. u toku proizvodnje i zrenja tradicionalne srpske kobasice (Petrovačka kobasica) kao i da se okarakterišu izolati dobijeni umnožavanjem *hlyA* gena. Rezultati dobijeni standardnim mikrobiološkim i molekularnim metodama su pokazali da je tokom fermentacije, sušenja, zrenja i skladištenja Petrovačke kobasice, 17 od ukupno 99 uzoraka bilo pozitivno na prisustvo *Listeria* spp. Među njima, otkriven je hemolitični, atipični nepatogeni soj *L. innocua* FSL J1-023, čija je genomska sekvenca važna u rezumevanju uloge horizontalnog genskog transfera i rekombinacije tokom evolucije patogenosti. Najvažnije karakteristike proizvoda koje su uticale na preživljavanje i rast *Listeria* spp. tokom proizvodnje i zrenja Petrovačke kobasice bili su pH, aktivnost vode, temperature i starter kultura.